

Look Now Before It's Too Late!

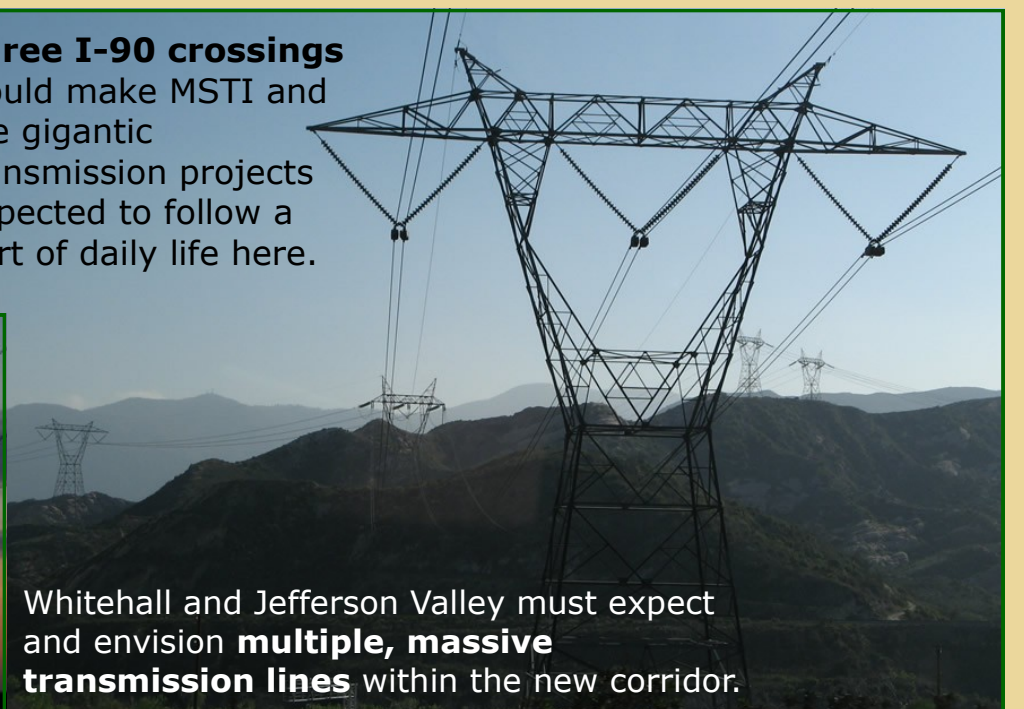


MSTI will affect every resident and visitor.

Government officials have made it clear they are selecting a corridor for **several massive transmission projects**, not just MSTI. The decision to place MSTI through greater Whitehall and Jefferson Valley will seal our fate as the preferred corridor for at least three export projects that are currently proposed.



Three I-90 crossings would make MSTI and the gigantic transmission projects expected to follow a part of daily life here.



Whitehall and Jefferson Valley must expect and envision **multiple, massive transmission lines** within the new corridor.



Our towns and families have been wrongfully targeted by NorthWestern and MSTI for business and political expedience.

NorthWestern Energy made a business and political decision that it would be easier and cheaper to **cram MSTI down the throats of communities and families** than fight well-financed environmental groups over using public land routes.

But it is **not legal** for Montana Department of Environmental Quality (DEQ) and Bureau of Land Management (BLM) to route MSTI on undesignated, unimpacted private land if an already federally designated, already impacted energy corridor is available for MSTI. The law requires agencies to prefer the designated federal energy corridors on public land that taxpayers have already paid to establish.



www.SaveScenicJV.org