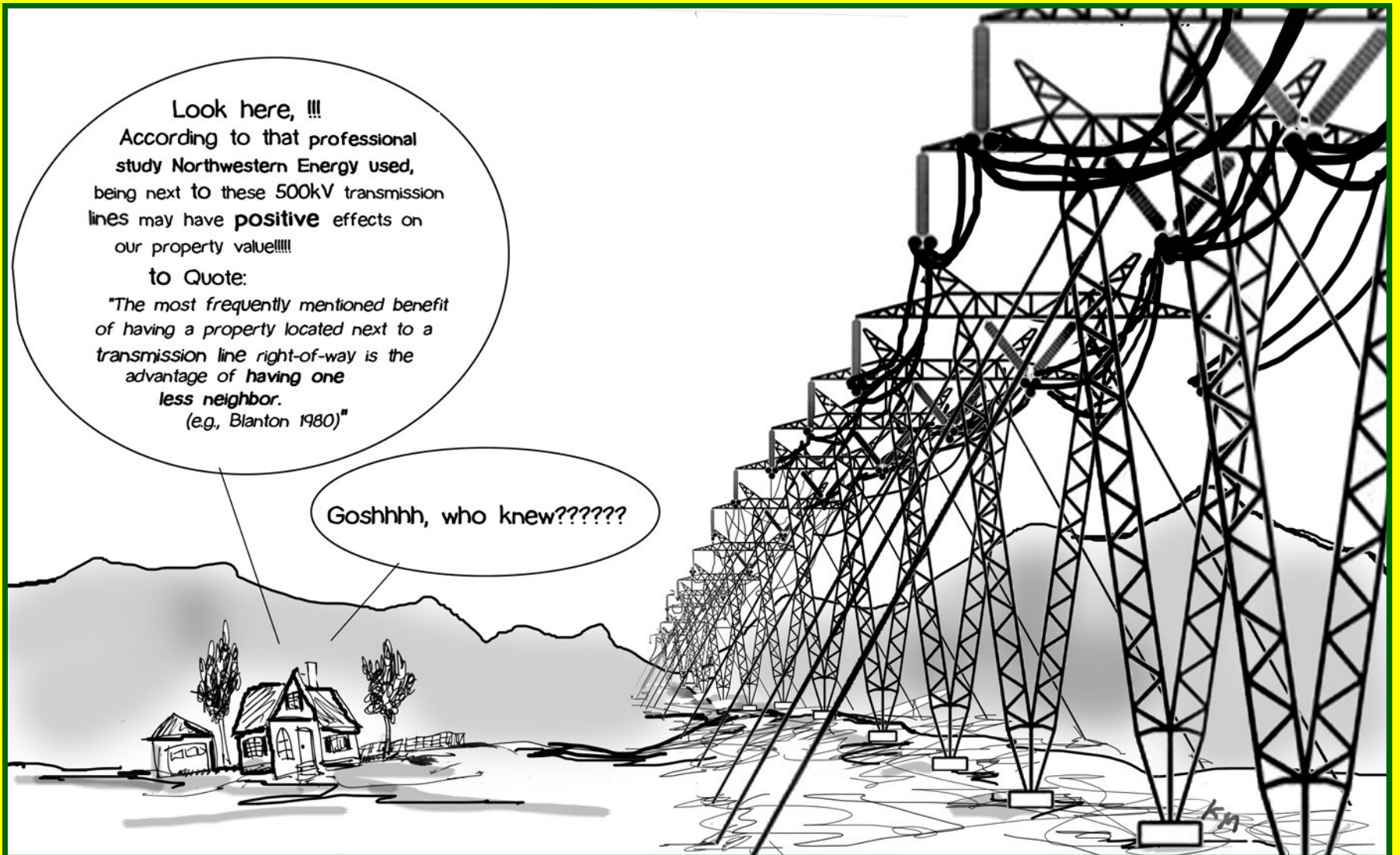


# How Would Federal “Stimulus” Spending on MSTI Be Put To Work Locally?

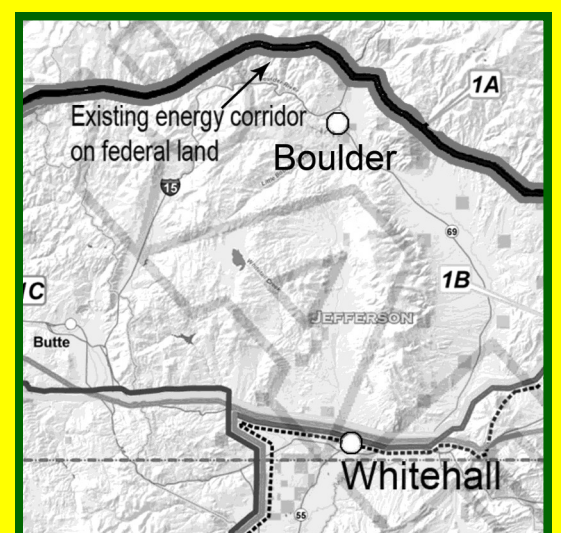
## 1) Targeting our communities and families?



## or, 2) Following an already designated federal energy corridor on public land?

The federal **Bureau of Land Management** (“BLM”) and state **Department of Environmental Quality** (“DEQ”) are the co-lead agencies deciding where the Mountain State Transmission Intertie (“MSTI”) will be sited. Their decision, in effect, creates the energy corridor that at least two additional 500kV lines, in various planning stages, are expected to follow. Our agencies *can choose* an already designated, already heavily impacted federal energy corridor instead of targeting Jefferson Valley as a new corridor. The federal Section 368 energy corridor follows the existing BPA 500 kV line that crosses I-15 north of Boulder.

**Federal taxpayers, speak up. Don't let Northwestern Energy use our own stimulus tax contributions against us!**



**[www.SaveScenicJV.org](http://www.SaveScenicJV.org)**